



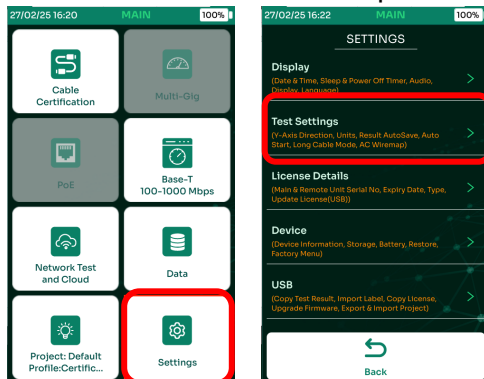
KNOWLEDGE BASE

Article #12

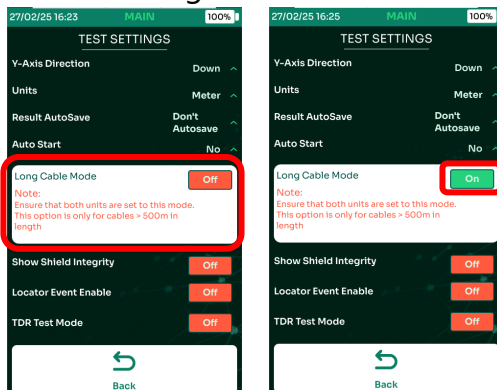
Long Cable Testing

This article describes how to test very long cables. The standard autotest is supported by the TestPro up to 600m. There is also a special test mode for cables from 500m to 1000m in length. These situations are becoming more common with the growth in Cat 3 IoT and low speed building automation applications. Testing of these longer cables typically will require a special test limit, as using Standards-based limits will fail due to Length, Delay, Resistance and Insertion Loss. Please contact AEM technical support at customercare@aem-test.com for information on custom limits. The steps for using the Long Cable test mode are outlined below.

1. On the TestPro Main unit, press Settings, then Test Settings.



2. Look for Long Cable Mode, then turn on Long Cable Mode.



3. **Important!** Repeat steps 1 and 2 above for the TestPro Remote unit. Both Main and Remote must be set to Long Cable mode.
4. Perform project Setup as usual, selecting the correct Test Limit and Cable in the project profile.
5. Select Cable Certification, then Autotest. The results will be displayed. In the example here, we see a failed result when using a Standards-based test limit. Please contact AEM for information about custom limits for long cables.

