



TESTPRO CV100

QUICK START GUIDE

TestPro CV100

Quick Start Guide

AEM

TestPro Quick Start Guide

This is a Quick Start Guide only. Please refer to TestPro User Guide for more detailed instructions.

Please register your TestPro at www.AEM-Test.com/myaccount to be notified of firmware and software updates and to get free access to our library of TestPro Training Videos on demand.

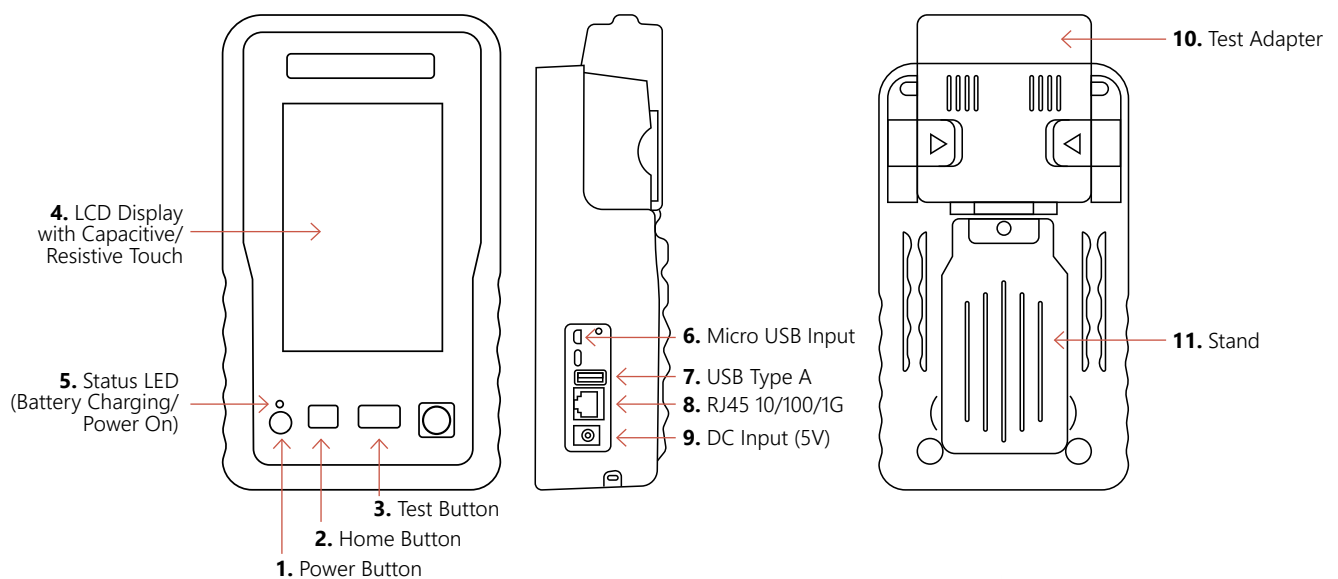


Standard Kit Contents

- 2 TestPro CV100 Handheld Testers
- 2 AC Power Adapters
- 2 Hanging Straps
- USB Flash Drive with TestDataPro Results Management Software
- USB Cable
- Network Validator Kit adds AD-NETCABLE Adapters
- Copper Certification Kits add PL Adapters and Channel Adapters
- Quick Start Guide
- Fiber Certification Kits add Fiber Adapters, Fiber Inspection Scope, Reference Cables, Couplers, Cleaner and Additional Case
- Calibration Certificate



TestPro CV100 Features



WWW.AEM-TEST.COM

customer@aem-test.com | Version # : 2.3 / Part # : 2201-0010

TestPro CV100

Quick Start Guide

AEM

The TestPro CV100 features a touchscreen based interface. Product features include:

1.	POWER BUTTON	<ul style="list-style-type: none">• Powering on : press for 1 second• Powering off : press the button once and then select [Power Off] on the touchscreen• Force shutdown : press and hold the power button for 6 seconds or longer.• Note that Force Shutdown may result in loss of recent test data.
2.	HOME BUTTON	<ul style="list-style-type: none">• Takes you back to home screen on the touchscreen interface.
3.	TEST BUTTON	<ul style="list-style-type: none">• Starts an Autotest (Type of Autotest depends on the adapter attached to the unit.)
4.	LCD DISPLAY	<ul style="list-style-type: none">• Capacitive/Resistive touchscreen, with color graphical user interface to navigate the menu and to view results.
5.	STATUS LED	<ul style="list-style-type: none">• Red : battery charging (when unit is off)• Amber : battery charging (when unit is on)• Green : battery not charging (when unit is on)
6.	MICRO USB INPUT	<ul style="list-style-type: none">• Establishes a USB-based wired link between the TestPro unit and a personal computer.• Test results can be transferred to PC software (TestDataPro) via this connection.
7.	USB TYPE A	<ul style="list-style-type: none">• USB flash drive connection to store test results and for software updates.
8.	RJ4510/100/1G	<ul style="list-style-type: none">• For validation testing of cables up to 1G (functionality is built into the basic TestPro kit).
9.	DC INPUT	<ul style="list-style-type: none">• Connection for 5V DC supply (WARNING : Do not connect to any power supply other than the power adapter supplied by AEM).
10.	TEST ADAPTER	<ul style="list-style-type: none">• A variety of plug and play adapters can be used to change the function of the TestPro modular platform.
11.	STAND	<ul style="list-style-type: none">• Retract stand to place it on a table or any other flat surface, freeing you to perform other tasks while keeping an eye on the screen.

For reference purposes, once TestPro is powered up, the Main and Remote units are identified in the upper center of the display as shown here:



WWW.AEM-TEST.COM

customer@aem-test.com | Version # : 2.3 / Part # : 2201-0010

TestPro CV100

Quick Start Guide

AEM

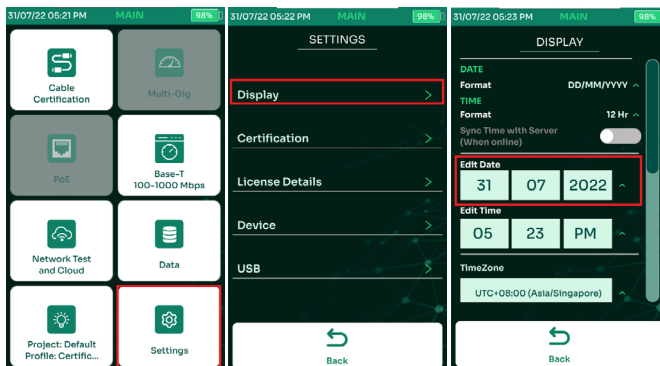
Copper Certification Setup and Testing

Note: Press the "Home" button on the front of TestPro unit to return to the Home screen display at any time.

1. Insert the desired test adapter (Channel or Permanent Link) to the back of the TestPro handset if not already inserted by squeezing the latches marked with arrows, aligning the adapter slots with the tabs on back of TestPro and push into place until fully inserted and release the latches. To remove adapters, squeeze latches and pull adapter straight back (not up).

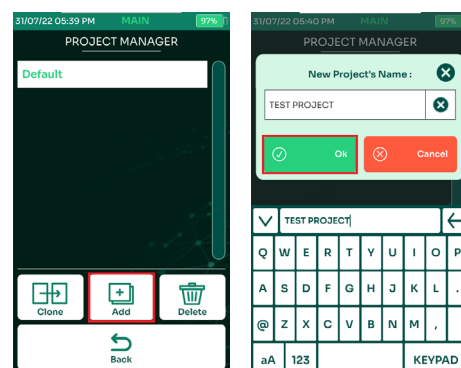
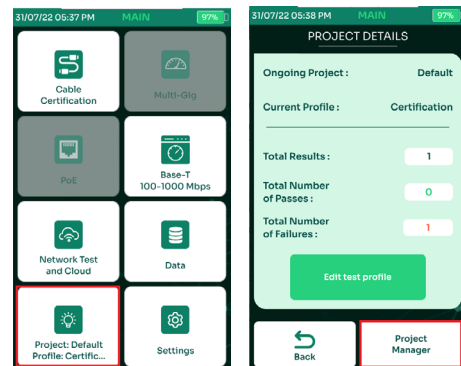
2. Press the Power Button to power up TestPro. The unit will recognize the inserted test adapter as designated for copper certification. Note: All TestPro test adapters are hot-swappable.

3. Date/Time setting: On main unit click Settings > Display then select date format (DD/MM/YY or MM/DD/YY). Select either 12 h or 24 h time format. Click on the date to open the edit date menu and scroll up/down to change. Changing the Month, Year, Hours and Minutes is the same process. After all changes are made, click Save.



4. In the Display in the Settings menu scroll down to Sleep Mode (screen goes dark after set time, touch screen to wake), Power Off Timer and adjust the display brightness and audio volume.
5. In the Certification in the Settings menu, select Units and choose unit of measure (feet/meters). To set up a project:

6. To set up a project:
 - a. On the Main unit, select the Project icon in the lower left of the screen, then click "Project Manager" > "Add New". Then enter your project name, hit the green Ok.



- b. When prompted, hit yes to set your project as the current project, then select the profile type "Copper Certification" and click save in lower right corner. Hit the "Back" button and current Project (name) and Profile (Certification) at the top.

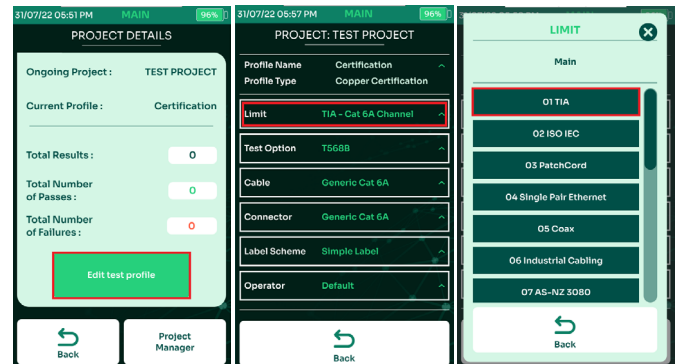
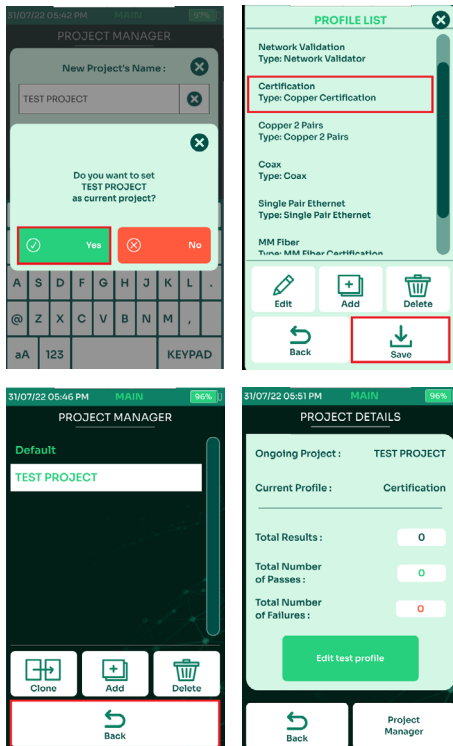
TestPro CV100

Quick Start Guide

AEM

Copper Certification Setup and Testing

Note: Press the "Home" button on the front of TestPro unit to return to the Home screen display at any time.



7. Click "Edit test profile" and you will see the following parameters available to edit by selecting them:
 - a. Limit – select the test limit, TIA Cat6A Channel for example.
 - b. Test Option – select T568B, T568A. Crossover, 1000 BASE-T Crossover, Ethernet M12 2-Pair Crossed wiring pattern.
 - c. Cable – select a generic cable, Cat6A Unshielded for example, or a specific manufacturer and part number.
 - d. Connector – choose a generic connector or a manufacturer specific one.
 - e. Label Scheme – choose the default simple label scheme, create a new one or choose an existing already created.
 - f. Operator – enter the name or initials of the person performing the tests.

8. Once the necessary changes are made to the above parameters, TestPro is ready to test, click "Home" button to return to the home screen.
9. Connect the Main unit to one end of the cable under test and the Remote to the other end. Once both units are connected to opposite ends of the link/channel, TestPro will immediately get a wiremap displayed on the screen. This is called Live Wiremap and immediately indicates a good or bad Wiremap.
10. If the Wiremap shows an open or short, touch the screen in the middle of the Wiremap to run diagnostic to show distance to fault. If the Wiremap shows good, simply click "Autotest" on the screen, or press the Autotest button on the front of TestPro to initiate the Autotest. The test will take 6 seconds. Once completed, a test summary screen will appear indicating Pass or Fail.
 - a. If the test failed, the summary screen will indicate why it failed, additional details, including Return Loss TDR (RL Locator) and Crosstalk TDR (NEXT Locator), can help determine where the problem is located. Correct any problems and retest.
 - b. If the test passed, click the "Save" icon in the lower right of the test summary screen. The first label ID in the label scheme will be selected by default.

WWW.AEM-TEST.COM

customer@em-test.com | Version #: 2.3 / Part #: 2201-0010

TestPro CV100

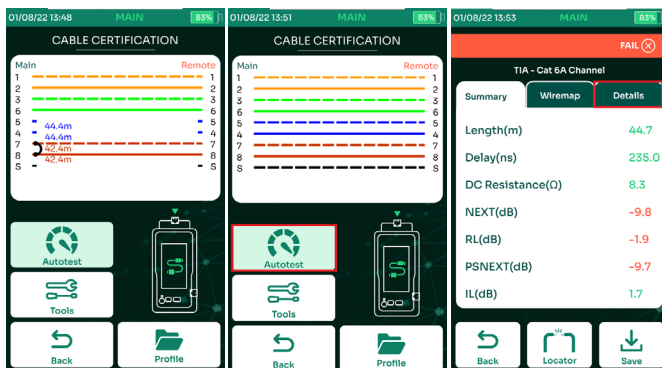
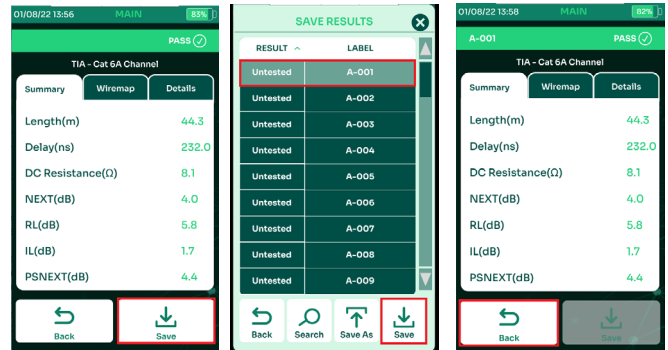
Quick Start Guide



Copper Certification Setup and Testing

Note: Press the "Home" button on the front of TestPro unit to return to the Home screen display at any time.

If this is the label ID you are testing, click the "Save" icon, if not, scroll the list to find the correct label ID or click the "Search" icon and type the full label ID and then the green Ok to search for the label. The label scheme automatically advances to the next label in your chosen scheme after saving from the list. Alternately, if you need to save a label ID not in your present label scheme, click "Save As" then enter the label ID and click the green Ok to save it.



11. After test is saved, hit Back button. Continue to the next cable to be tested and repeat Steps 9 & 10.
12. To upload all test results once testing is complete, insert the USB flash drive into the USB port on the right side of TestPro. A popup menu will appear, choose "Copy Test Results To USB". TestPro will upload the tests and give an indication of how many tests were uploaded. The USB flash drive may be removed and plugged into a computer running TestDataPro to manage the test results. Please see the TestDataPro User Guide for detailed instructions on managing test results with TestDataPro PC Software.

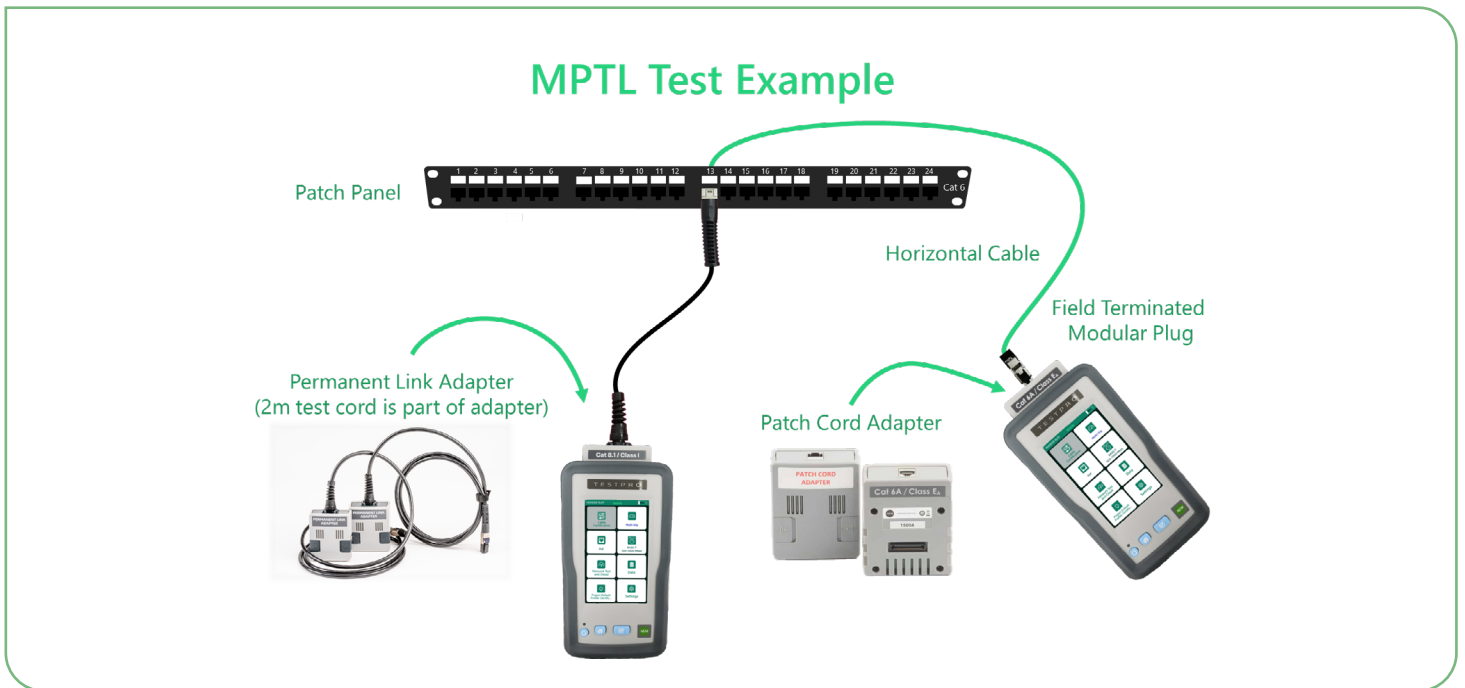
TestPro CV100

Quick Start Guide

AEM

Copper Certification Setup and Testing

Note: Press the "Home" button on the front of TestPro unit to return to the Home screen display at any time.



13. MPTL or Modular Plug Terminated Links almost consists of a permanent link consisting of wall-mount jacks at one end of cabling and patch panel at the other end and Patch-cords to connect networking end-points to wall-mount jacks at both ends, wherein the entire cabling including the patch-cords (but not the plugs at the end-point connections) is referred to as the channel.

In a traditional enterprise network installation, the primary objective was to provide a cabling channel from the computers in the work-area to the telecom room.

Increasingly, the networking end-points are IoT devices other than computers and connecting them calls for adaptation in cabling topology. Devices such as IP security cameras have a built-in jack for network connection. In order to cater to installation of these devices, a new topology is now accepted by the standardization bodies. This new topology, Modular Plug Terminated Link ("MPTL") is a variation of permanent link where one of the ends is terminated into a plug.

To test MPTL links using TestPro, attach a CAT6A or CAT8.1 permanent link adapter to the main TestPro unit and a CAT6A patch-cord adapter to the remote TestPro unit (these adapters can be interchanged between the main and remote units) and appropriate MPTL Limit must be used.

TestPro CV100

Quick Start Guide



Notes/Serial Numbers :

Technical Support

Live Phone Support :

Monday - Friday | 8am-5pm (Arizona,USA)

T : 480-534-1232

Toll Free : 833-572-6916

Email Monitored 24hrs

customer-care@aem-test.com

For more information and details specifications,
please visit: AEM-Test.com/testpro

If you need technical assistance, please visit us at:

AEM-Test.com/customer-care

AEM International, Ltd.

5560 West Chandler Blvd. Ste.3

Chandler, Arizona 85226

T : 480-531-1232

AEM Singapore PTE.Ltd

52 Serangoon North Ave 4

Singapore 555853

T : +65 6483 1811

F: +65 6483 1822



WWW.AEM-TEST.COM

customer@care@aem-test.com | Version # : 2.1 / Part # : 2201-0010